

KOBRA 240 SS4 Turbo

CLASSIC LINE SHREDDER
PERSONAL USE AND SMALL/MEDIUM OFFICES



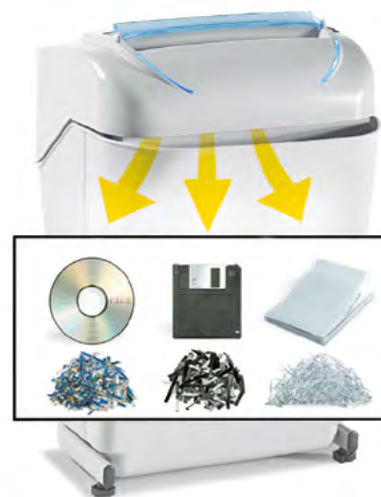
Mode: KOBRA 240 SS4 TURBO
Article Code: 99.706 TURBO
EAN Code: 8 026064 997065



Throat width:	9.5 inch
Shred size:	1/8 inch straight cut
Security level ISO/IEC 21964 (DIN 66399):	P-2 O-2 T-2 E-2
Paper capacity* (sheets at a time):	up to 30 sheets
Shreddable materials:	Paper, Credit cards, Credit cards with chip, CDs/DVDs, Floppy-disks
Waste bag volume:	9.5 gal
Speed:	8 ft/min
Noise level:	55 dB(A)
Voltage:	115 Volt / 60 Hz
Power:	3/4 HP
Dimensions (WxDxH):	14.5 x 13 x 22 inch
Weight:	33 lbs – Packaging: 1 unit per box

Datasheet n.26 rev.1

* Capacity varies based on supply power, weight, quality and grain of paper, operating temperature and blade lubrication.



Certifications:  **CB CE**

Trade Agreement Act (TAA) and Buy American Act Compliant

MAIN FEATURES

Straight-cut shredder equipped with heavy duty chain drive system with metal gears. Kobra 240 SS4 TURBO featuring the "Turbo Boost System" for extra-shredding capacity can shred up to 30 sheets in one pass and eliminate paper jams. Carbon hardened cutting knives unaffected by staples and clips.

Motor thermal protection: 24 hour continuous duty operations without overheating or duty cycles. Energy Smart System with optical illuminated indicators for power saving stand-by mode and environmental protection. Equipped with a removable waste bin for easy empty operations, does not require lifting of the cutting head.

- **Turbo Boost System:** by pressing the Turbo switch the shredding capacity of the machine is increased by 30%
- **Super Potential Power Unit:** heavy duty chain drive system with steel gears
- **Continuous duty shredding:** 24 hour continuous duty motor without overheating and duty cycles. Motor thermal protection.
- **Carbon hardened steel cutting knives** unaffected by staples and clips
- **Energy Smart System:** power saving stand-by mode with optical illuminated indicators
- **Oil-free System:** no need of lubrication and maintenance of cutting knives
- **Start & Stop:** automatic start and stop through electronic eyes with stand-by function
- **Safety Stop:** automatically stops at bin removal
- **35 litre removable waste bin** for easy empty operations: does not require lifting the cutting head. Equipped with a mechanism to separate shredded paper from plastic shreds. **Eco-friendly:** does not require plastic bags.



 **24 HOUR CONTINUOUS DUTY MOTOR**

Motor thermal protection. Continuous duty motor, no overheating and no duty cycles. Optical illuminated indicators for power saving stand-by mode.



 **SUPER POTENTIAL POWER UNIT**

Heavy duty chain drive with steel gears which offer reliability and resistance to wear. Carbon hardened steel cutting knives unaffected by staples and clips.



 **TURBO BOOST SYSTEM**

by pressing the Turbo switch the shredding capacity of the machine is increased by 30%.



 **COVENIENT REMOVABLE WASTE BIN**

for easy empty operations: does not require lifting the cutting head. Equipped with a mechanism to separate shredded paper from plastic shreds.