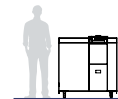


# KOBRA HDD

## HARD DISK DRIVE (HDD) SHREDDER

Manufacturer: ELCOMAN srl  
Brand: KOBRA  
Model: HDD  
Article Code: 99.945  
EAN Code: 8 026064 999458



Throat width:	127 x 30 mm
Shred size:	40 mm x random cross cut
Security level ISO/IEC 21964 (DIN 66399)	H-3 T-1 E-2
Shreddable materials:	Hard Disk Drives (HDD), Solid State Drives (SSD), Solid State Devices (Phones and PDAs).
Waste bin capacity:	40 liters
Rated Capacity*: Cutting Speed**:	280 HDD/hour (3.5" drive) 30 mm/s
Noise level:	50 dB(A)
Voltage:	380-415V / 50-60Hz, 3 phases, up to 20 Amp.
Power:	3000 Watt
Dimensions (WxDxH):	120 x 84 x 123 cm
Net weight:	550 Kg

\* Capacity varies based on supply power, drive structure, operating temperature and blade lubrication.

\*\* Speed calculated at 60 Hz as knife outside diameter x rpm.



## MAIN FEATURES

**Kobra HDD is a hard disk drive shredder capable of destroying rotational and digital media devices including Hard Disk Drives up to 3.5", Solid State Drives (SSD), LTO, Ultrium magnetic tapes and Solid State Devices (Phones and PDAs).** The new KOBRA HDD produces very low noise levels and continuous duty operation, destroying rotational and digital media devices with a shred dimension of 40 mm x random (H-3) and making retrieval impossible; it can shred up to 280 3.5" hard drives per hour. KOBRA HDD offers the latest Touch Screen Technology, the most technologically advanced on the market today. Functions are activated by simply touching the panel. Also, illuminated optical indicators clearly show the current status of the machine.

- **24 hour continuous duty motor** enables powerful and long operation at a minimum noise level
- **High efficiency motor:** saves considerable electrical energy cost
- **LED-FCS Touch Screen Panel:** functions are activated by simply touching the panel. The special **LED Feeding Control System** allows the operator to monitor and control the load on cutting knives during bulk and continuous shredding.
- Exclusive shredding technology through **high strength carbon grade steel cutting knives** for extended durability
- **Automatic Stop** with light indicator for bag full
- **Safety Stop** in case of open door / bin removal
- **Automatic Reverse** in case of jamming
- **Emergency stop switch:** stops all machine functions immediately
- Easy to move thanks to **heavy duty casters**
- **OPTION: KOBRA LMS - LOG MANAGEMENT SYSTEM** allows to scan and automatically store into a computer the barcode serial number of the device being shredded. KOBRA LMS **allows to certify the shredding** of any data holder to prove compliance to the regulations in case of inspection.

## OPTIONS



**LOG MANAGEMENT SYSTEM:** allows to scan and automatically store into a computer the barcode serial number of the device being shredded keeping track of day and hour.



Kobra HDD can be supplied, on request, with the NSA National Security Agency approved Hard Disk degausser, model name MAGPRO 100.



Convenient touch-screen panel with LED Feeding Control System.



**"TITAN-COLOSSUS"**  
gearmotor  
driving

The Kobra HDD is equipped with the "Titan-Colossus" gearmotor driving specially designed heavy duty cutting knives with unmatched power to shred large quantities of rotational and digital media devices, including: Hard Disk Drives up to 3.5", Solid State Drives (SSD), LTO, Ultrium magnetic tapes and Solid State Devices (Phones and PDAs).

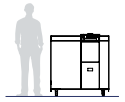


Easy removal and emptying of waste container.

# KOBRA HDD H4

## HARD DISK DRIVE (HDD) SHREDDER

Manufacturer: ELCOMAN srl  
Brand: KOBRA  
Model: HDD H4  
Article Code: 99.945H4  
EAN Code: 8 026064 999458



Throat width:	127 x 30 mm
Shred size:	30 x 65 mm cross cut
Security level ISO/IEC 21964 (DIN 66399)	H-4 T-2 E-2
Shreddable materials:	Hard Disk Drives (HDD), Solid State Drives (SSD), Solid State Devices (Phones and PDAs).
Waste bin capacity:	40 liters
Rated Capacity*: Cutting Speed**:	280 HDD/hour (3.5" drive) 30 mm/s
Noise level:	50 dB(A)
Voltage:	380-415V / 50-60Hz, 3 phases, up to 20 Amp.
Power:	3000 Watt
Dimensions (WxDxH):	120 x 84 x 123 cm
Net weight:	550 Kg

\* Capacity varies based on supply power, drive structure, operating temperature and blade lubrication.

\*\* Speed calculated at 60 Hz as knife outside diameter x rpm.



## MAIN FEATURES

**Kobra HDD H4 is a hard disk drive shredder compliant with level H-4 according to DIN66399 with reduction of data carrier into particles of size  $\leq 2000$  mm<sup>2</sup> capable of destroying rotational and digital media devices including Hard Disk Drives up to 3.5", Solid State Drives (SSD), LTO, Ultrium magnetic tapes and Solid State Devices (Phones and PDAs).** The new KOBRA HDD H4 produces very low noise levels and continuous duty operation, destroying rotational and digital media devices and making retrieval impossible; it can shred up to 280 3.5" hard drives per hour. KOBRA HDD H4 offers the latest Touch Screen Technology, the most technologically advanced on the market today. Functions are activated by simply touching the panel. Also, illuminated optical indicators clearly show the current status of the machine.

- **24 hour continuous duty motor** enables powerful and long operation at a minimum noise level
- **High efficiency motor:** saves considerable electrical energy cost
- **LED-FCS Touch Screen Panel:** functions are activated by simply touching the panel. The special **LED Feeding Control System** allows the operator to monitor and control the load on cutting knives during bulk and continuous shredding.
- Exclusive shredding technology through **high strength carbon grade steel cutting knives** for extended durability
- **Automatic Stop** with light indicator for bag full
- **Safety Stop** in case of open door / bin removal
- **Automatic Reverse** in case of jamming
- **Emergency stop switch:** stops all machine functions immediately
- Easy to move thanks to **heavy duty casters**

## OPTIONS



**LOG MANAGEMENT SYSTEM:** allows to scan and automatically store into a computer the barcode serial number of the device being shredded keeping track of day and hour.



Kobra HDD H4 can be supplied, on request, with the NSA National Security Agency approved Hard Disk degausser, model name MAGPRO 100.

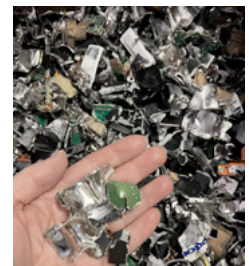


Convenient touch-screen panel with LED Feeding Control System.



**"TITAN-COLOSSUS"**  
gearmotor  
driving

The Kobra HDD H4 is equipped with the "Titan-Colossus" gearmotor driving specially designed heavy duty cutting knives with unmatched power to shred large quantities of rotational and digital media devices, including: Hard Disk Drives up to 3.5", Solid State Drives (SSD), LTO, Ultrium magnetic tapes and Solid State Devices (Phones and PDAs).



Easy removal and emptying of waste container. Particles of size  $\leq 2000$  mm<sup>2</sup> (H-4).